

## EMX Energy Portal cloud service adds new capabilities

Packet Power's EMX power and environmental monitoring service makes reviewing and using information even more intuitive with a number of enhancements to how data is viewed, analyzed and shared.

Friendly Name	[W] by phase	[A] by phase
	Range: 36.91 - 2380.04 Avg: 909.02 Sum: 7,272.28	Range: 0.59 - 12.27 Avg: 3.23 Sum: 41.87
Row 1_Cabinet 1 (B)	1,096.3	A: 5.78
Row 1_Cabinet 2 (A) BWTB1	2,380.0	A: 12.27
Row 1_Cabinet 2 (B) BWTB4	1,438.6	A: 7.52
Row 1_Cabinet 3 (B) BWTB2	689.4	A: 5.75
Row 1_Cabinet 1 (A)	59.5	A: 0.53
Row 1_Cabinet 4 (B)	36.3	A: 0.64
Row 1_Cabinet 4 (A)	373.4	A: 3.09
Row 1_Cabinet 3 (A)	1,198.7	A: 6.29

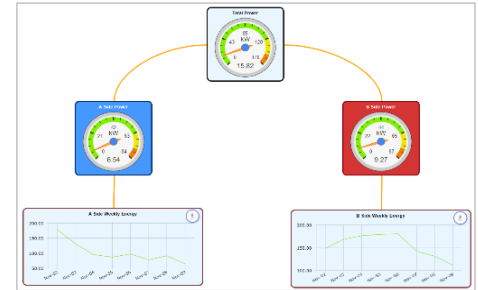
### Custom tables

- Add new data fields of your choice
- Use for location, pairing, warranty, etc.
- Remove columns from standard views
- Reorder columns to suit

Channel	A	B	C	Power
Voltage L1	120.1 V	120.1 V	120.1 V	120.1 V
Voltage L2	120.1 V	120.1 V	120.1 V	120.1 V
Current	276.6 A	276.6 A	276.6 A	276.6 A
% Total Current	28% W	28% B	28% C	28% P
Power	1,020 kW	1,020 kW	1,020 kW	1,020 kW
Apparent Power	1,020 kVA	1,020 kVA	1,020 kVA	1,020 kVA
Power Factor	0.99	0.99	0.99	0.99
Energy	10,200 kWh	10,200 kWh	10,200 kWh	10,200 kWh

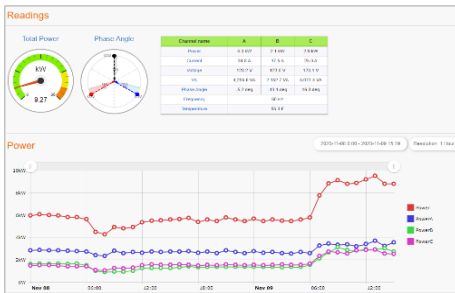
### Panel editor

- Virtual panel schedule
- Easily change circuit types
- Name your circuits
- Real-time panel view



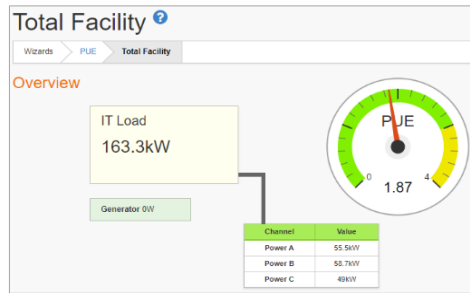
### More flexible dashboard creation

- More gauge types available
- Customizable colors for gauges, text and graph ranges
- Easily copy gauges and dashboards



### Circuit detail charts

- More options for chart time intervals
- Easily export data to CSV, XLSX
- Export graphs to jpeg, png, etc.



### PUE wizard

- Step-by-step instructions
- Easily define IT and non-IT loads
- Real-time and historical PUE
- Share as a dashboard



### Use data from non-Packet Power devices

- Access data using SNMP or Modbus
- Supports a wide range of data types
- Ideal for CRAH, UPS, flow meters, ATS

### Other Enhancements

- Integration templates for third-party UPS and CRAH devices
- Supports Packet Power's next generation 3-phase power meter delivering more monitoring flexibility
- EMX API now supports MQTT to share data easily with IoT platforms
- Publish layout views to simplify and securely share with others
- Cloud throughput, architecture and system recovery improvements

### Easiest, fastest path to energy and environmental insights

EMX delivers full power and environmental monitoring capabilities at a fraction of the cost and complexity of competing solutions and without the need for external consultants. EMX is available as a cloud-based service or local software application

For more information go to: [www.packetpower.com/emx](http://www.packetpower.com/emx)